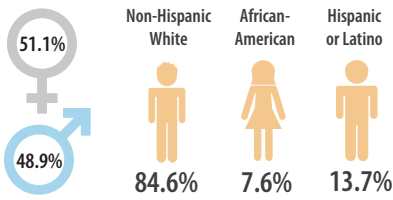


Sebastian County



Demographics



Population over 65 13.7%
Population under 18 24.3%
Total population 127,780
Births 1,704

Key findings

Weaknesses

- ▶ 2nd highest rate of children living in foster care (per 1,000 population under 18 years of age)
- ▶ 2nd highest rate of substance abuse arrests (per 1,000 population)
- ▶ 3rd highest rate of alcohol- or other drug-related crashes (per 1,000 population)
- ▶ 3rd highest rate of number of substance abuse treatment service provided

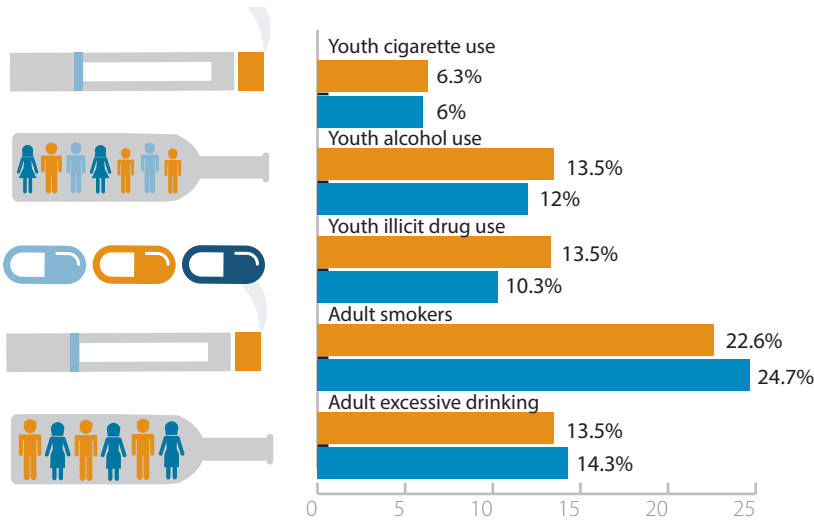
Strengths

- ▶ 4th lowest rate of laws and norms favorable to drug use
- ▶ 8th lowest rate of low commitment to school
- ▶ 10th highest rate of youth who perceive drinking one or two alcoholic beverages every day as a "moderate" or "great risk"
- ▶ 10th lowest rate of youth chewing tobacco use

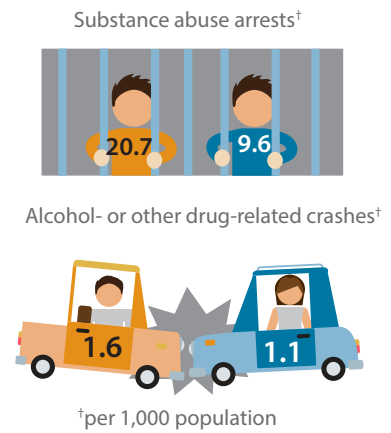
County vs. State

Substance Use

County State



Consequences



Risk and protective factors

Laws and norms favorable to drug use

26% (County) vs 31% (State)

Youth who perceive smoking as a risk*

83.9% (County) vs 84.9% (State)

Students who indicate trying marijuana once or twice puts a person at risk*

45.9% (County) vs 50.4% (State)

Friends using drugs

20.2% (County) vs 22.6% (State)

Parental attitudes favorable towards drug use

18.6% (County) vs 19.5% (State)

Youth who perceive drinking one or two alcoholic beverages every day as a risk*

69.5% (County) vs 72% (State)

High school substance infraction

28.9% (County) vs 49.2% (State)

Academic failure

39.5% (County) vs 40.8% (State)

* Indicates protective factors that decrease the likelihood that individuals or communities will develop substance use or mental disorders. Risk includes the perception of "moderate" to "great" risk.

Indicator	Sebastian County			Trend	Arkansas	Greater than
	2013	2014	2015		2015	State Rate**
Substance use						
Youth cigarette use ¹	6.6%	6.1%	6.3%		6.0%	●
Youth chewing tobacco use ¹	4.2%	4.3%	3.7%		4.8%	○
Youth alcohol use ¹	12.3%	12.8%	13.5%		12.0%	●
Youth illicit drug use ¹	12.5%	13.3%	13.3%		10.3%	●
Adult smokers (smoked ≥ 100 cigarettes and are currently smoking) ²	NA	22.6%	NA		NA	
Adult excessive drinking ²	NA	13.5%	NA		NA	
Consequences						
Substance abuse arrests (per 1,000 population) ³	20.5	17.8	20.7		9.6	●
Alcohol- or other drug-related crashes (per 1,000 population) ⁴	1.9	1.6	NA		NA	
Number of mental health clients served through Arkansas State Hospital and the Community Mental Health Centers ⁵	2805	2755	3158		69,398	
Number of substance abuse treatment service provided ⁵	545	888	1188		18,029	
Mental Health						
Suicide (per 100k population, 2009-2013) ⁶	13.8	14.3	15.5		17.0	○
Adolescent depressive symptoms ¹	43.2%	45.7%	46.9%		41.7%	●
Availability and access						
Beer permits (per 1,000 population) ⁷	1.4	1.4	1.4		0.9	●
Tobacco sales to minors (percent of failed tobacco checks) ⁸	7.3%	13.9%	9.2%		9.1%	●
Laws and norms favorable to drug use ¹	25.1%	28.5%	26.0%		31.0%	○
Perceived availability of drugs ¹	25.2%	25.5%	26.8%		23.6%	●
Crime						
Total crime index offenses (per 1,000 populations) ³	48.0	48.1	53.1		35.2	●
High community disorganization ¹	37.8%	38.5%	37.1%		35.5%	●
Economic Hardship						
Unemployment rates ⁹	7.6%	5.8%	5.0%		5.2%	○
Persons below poverty level ¹⁰	22.1%	22.1%	NA		NA	
Family						
Children living in foster care (per 1,000 population under 18 years of age) ⁵	27.2	26.0	27.3		11.2	●
Poor family management ¹	31.0%	30.5%	23.9%		25.7%	○
Family history of anti-social behavior ¹	31.0%	29.7%	31.4%		31.0%	●
Parental attitudes favorable towards drug use ¹	18.2%	19.7%	18.6%		19.5%	○
Individual/peers						
Early initiation of drug use ¹	19.2%	19.9%	18.3%		18.4%	○
Peer favorable attitudes to drug use ¹	24.2%	26.4%	24.6%		22.1%	●
Peer perceived risk of drug use ¹	45.8%	48.6%	47.6%		45.3%	●
Interaction with anti-social peers ¹	41.8%	44.6%	39.8%		38.6%	●
Friends using drugs ¹	22.3%	24.7%	22.6%		20.2%	●
Religiosity* ¹	65.9%	63.1%	67.1%		68.0%	○
Youth who perceive smoking as a "moderate" or "great risk"* ¹	85.0%	82.8%	84.9%		83.9%	●
Youth who perceive drinking one or two alcoholic beverages every day as a "moderate" or "great risk"* ¹	71.9%	70.0%	72.0%		69.5%	●
Students who indicate trying marijuana once or twice puts a person at "moderate" or "great risk"* ¹	49.7%	46.0%	45.9%		50.4%	○
Academic achievement/commitment						
High school dropouts ¹¹	2.2%	2.2%	2.3%		2.3%	○
Academic failure ¹	40.2%	40.2%	40.8%		39.5%	●
Low commitment to school ¹	32.0%	34.8%	35.6%		39.9%	○
School environment						
High school substance infraction (per 1,000 population of enrolled high school students) ¹¹	26.4	44.3	49.2		28.9	●
Transitions and mobility ¹	50.3%	50.8%	52.6%		51.3%	●
School opportunities for pro-social involvement* ¹	66.9%	62.4%	66.4%		64.3%	●
School rewards for pro-social involvement* ¹	62.5%	56.8%	59.0%		54.5%	●

*- Represents protective factors; **- ● = Yes, Greater than state rate/○ = No, Lower than state rate;

Source: 1. International Survey Associates, Inc., Arkansas Prevention Needs Assessment Student Survey; 2. County Health Rankings and Roadmaps, Robert Wood Johnson Foundation; 3. Arkansas Crime Information Center, Crime in Arkansas; 4. Arkansas State Police, Highway Safety office; 5. Arkansas Department of Human Services, Annual Statistical Report; 6. Arkansas Department of Health, Center for Health Statistics; 7. Arkansas Department of Finance and Administration, Alcoholic Beverage Control; 8. Arkansas Tobacco Control Board, Annual Compliance Reports; 9. U.S. Department of Labor, Bureau of Labor Statistics, Local Area Unemployment Statistics; 10. U.S. Census Bureau, State & County QuickFacts; 11. Arkansas Department of Education, Statewide Information System as reported through the Arkansas Public School Computer Network